

Downers Moose Family Center gives gift of life

A long time organization in the community, the Downers Grove Moose Family Center #1535 recently donated more than 20 units of blood to a local blood center.

According to Brendan Kenny, blood bank chairman for the lodge, 24 members participated in the recent blood drive benefiting the Heartland Blood Services.

"It is important to have events like this to help the community out", Kenny said. "The Downers Grove Moose Family Center, as part of our community service effort, will continue to schedule this type of event multiple times a year. The next event will be scheduled in June."

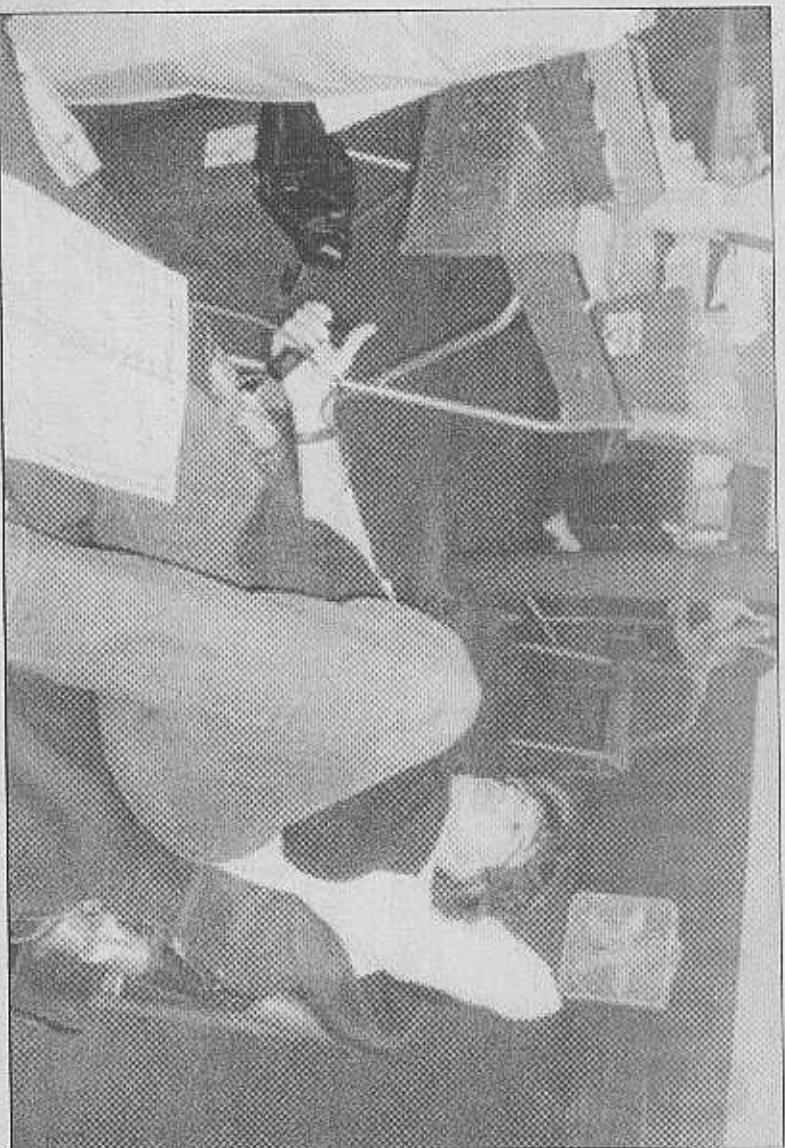
Heartland Blood Center officials said here is an urgent need for blood every day of

the year. On a daily basis, hospital patients depend on blood being available to make life-saving surgeries and treatments possible.

To support this need, the Heartland Blood Centers must collect nearly 600 units of blood each day to meet the needs of patients in the 35 hospitals it serves in the Chicago and Northwest Indiana area.

Moose International is an organization of 1.9 million members, in four nations, dedicated to bettering the lives of children and the elderly in need and helping to make communities better places to live.

Along with other units of Moose International, the Loyal Order of Moose supports the operation of Mooseheart



24 members of the Moose Family Center recently donated more than 20 units of blood to Heartland Blood Center (submitted photo)

Child City & School, a 1,000-acre community for children and teens in need, located 40 miles west of Chicago; and Moosehaven, a 63-acre retirement community for its members near Jacksonville, Fla.

In addition, Moose Lodges conduct approximately \$95 million worth of community service annually.

The Downers Grove Moose Family Center #1535 is at 1030 Warren Avenue. For more information, contact us at (630) 968-4550 or visit the Web site: www.dgmoose.org. For more information about becoming a blood donor, contact the Heartland Blood Centers, (800) 710-GIVE or visit the Web site: www.heartlandbc.org.